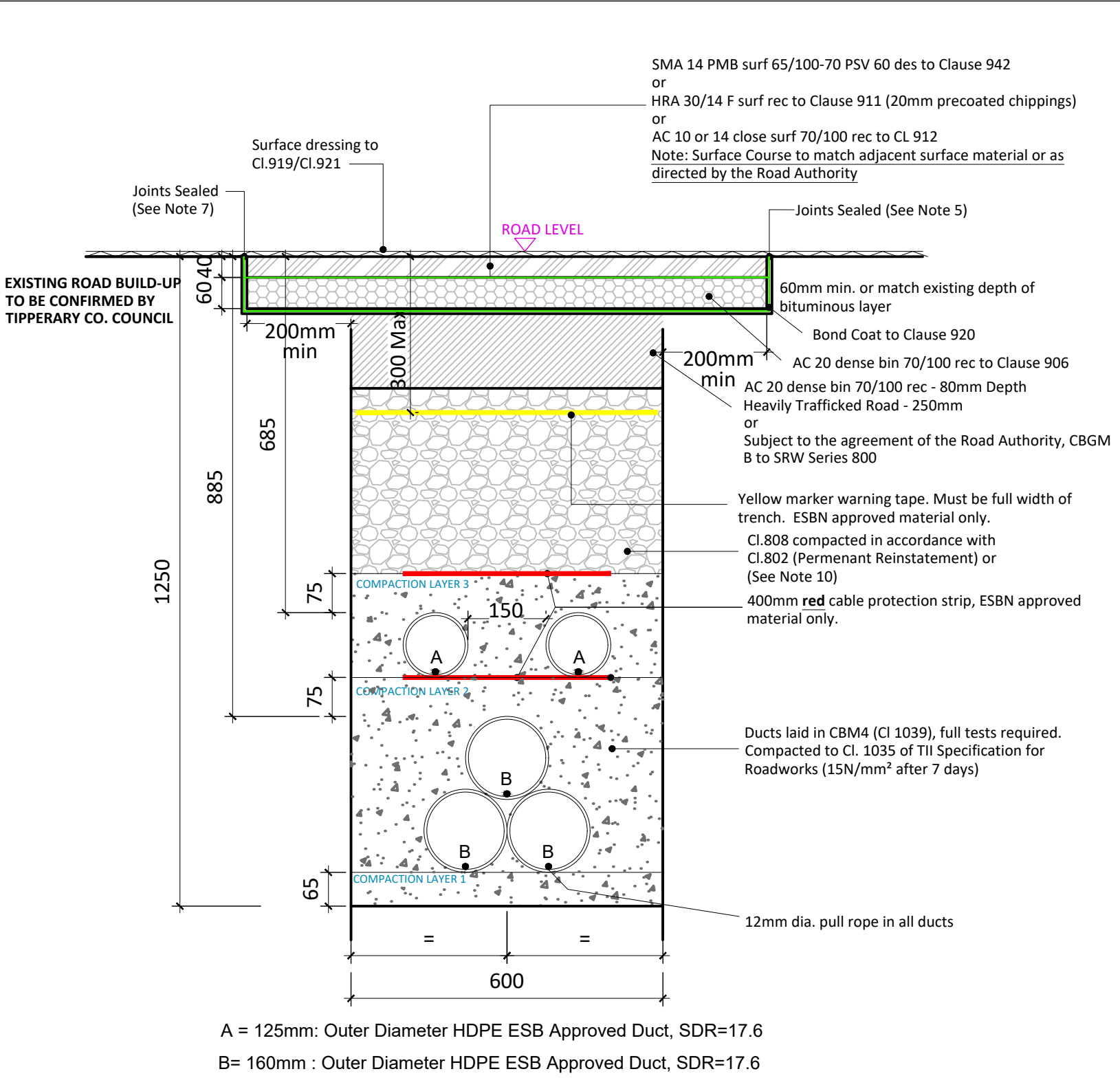
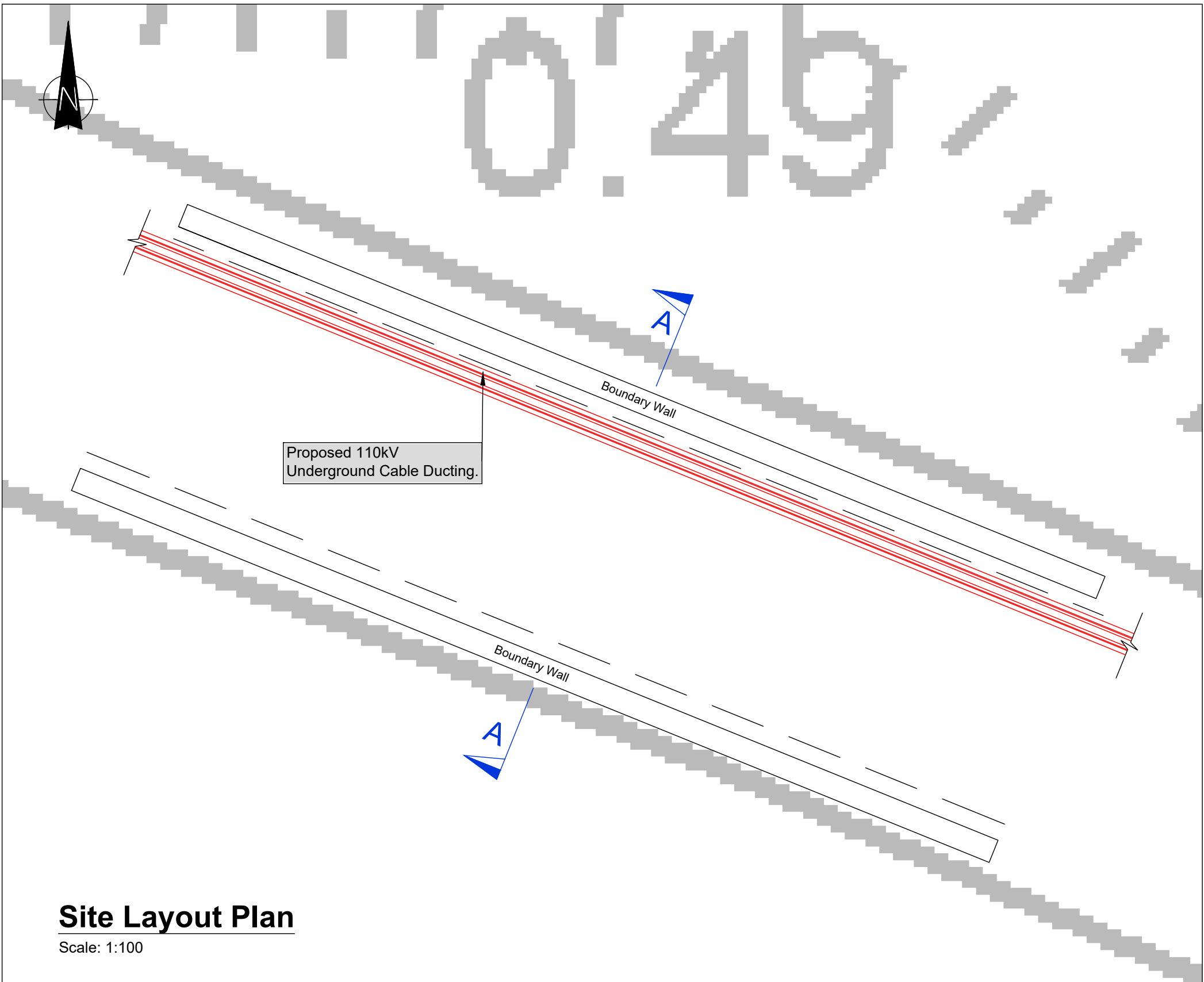


ISO A1 594mm x 841mm

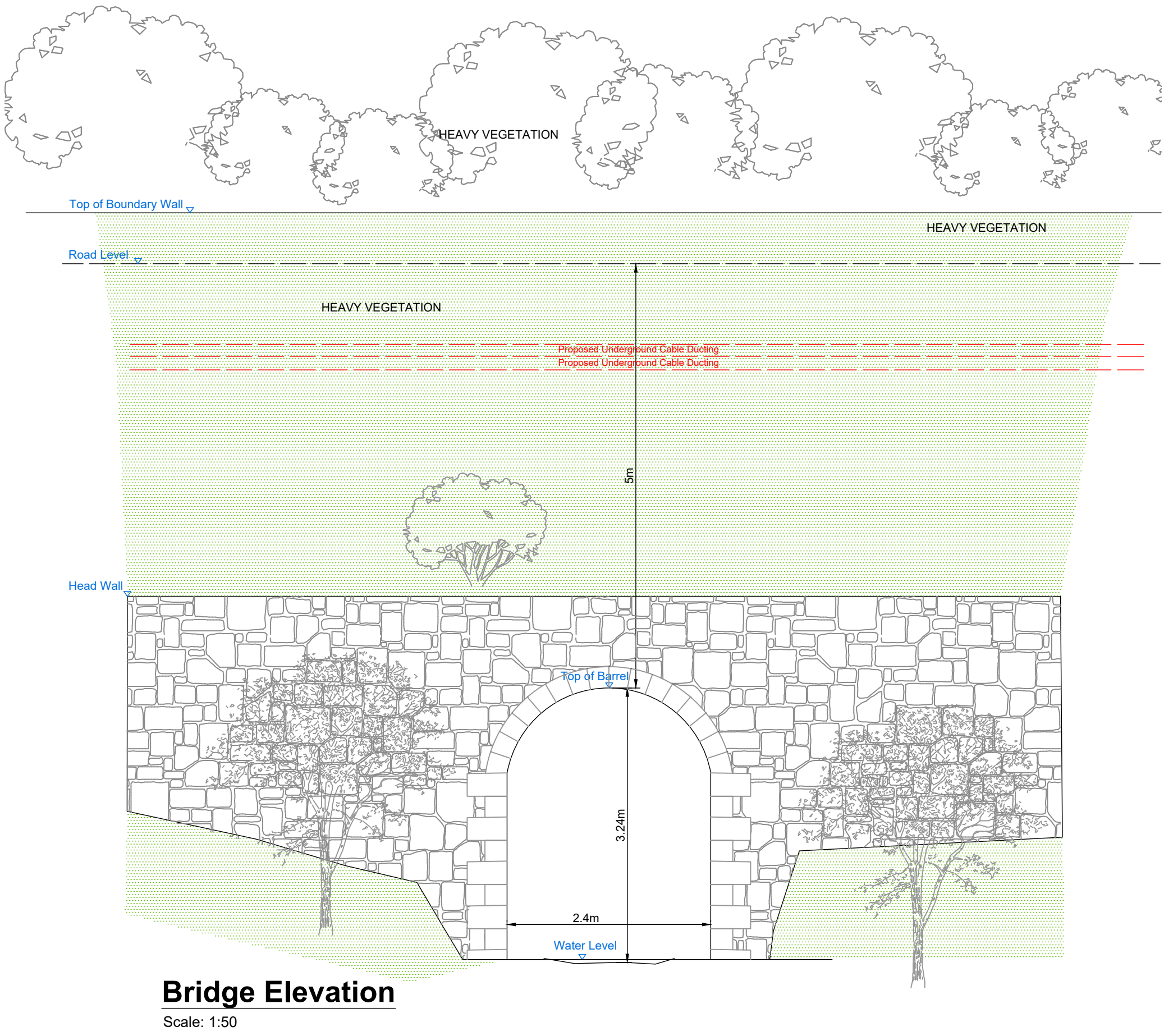
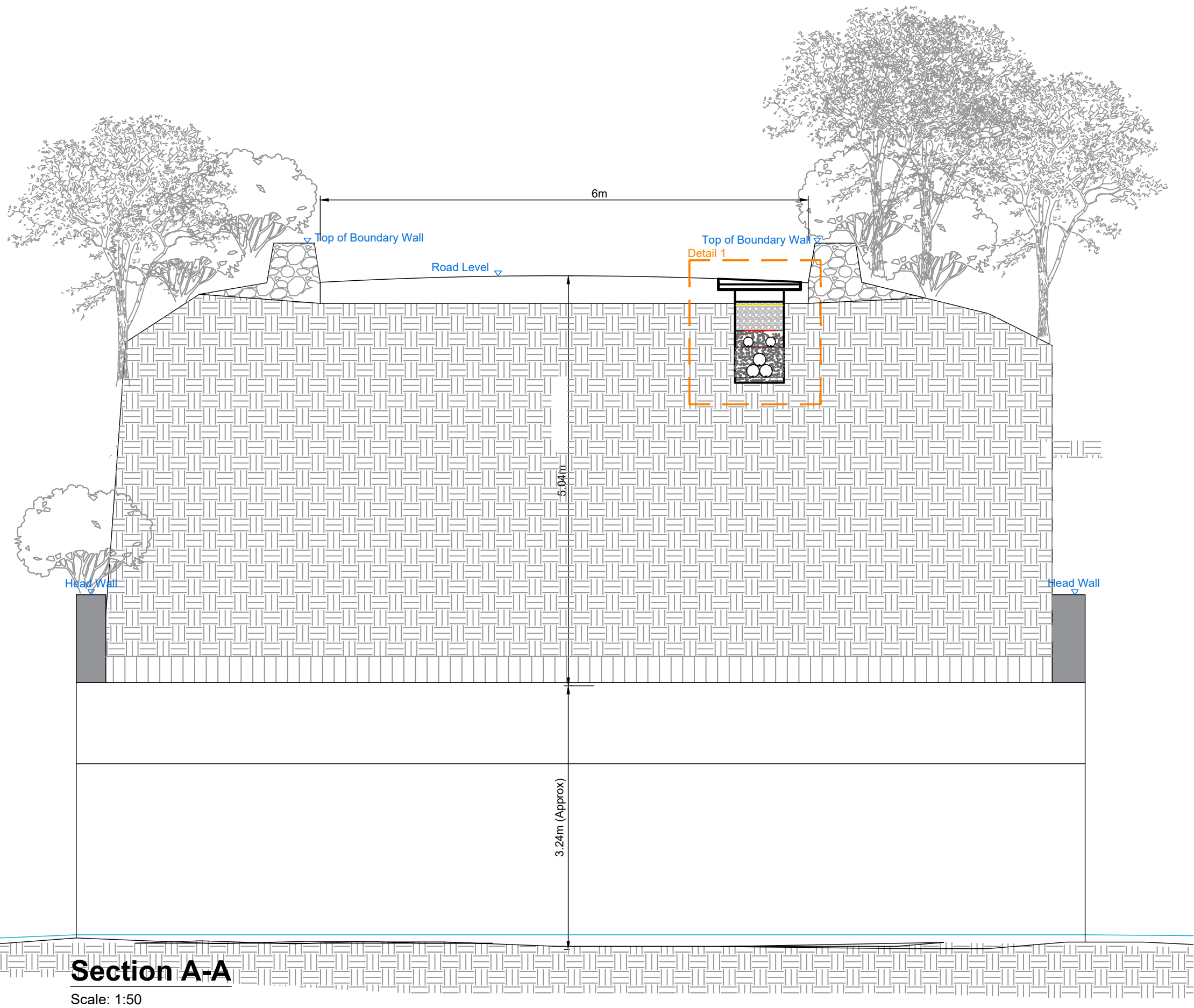
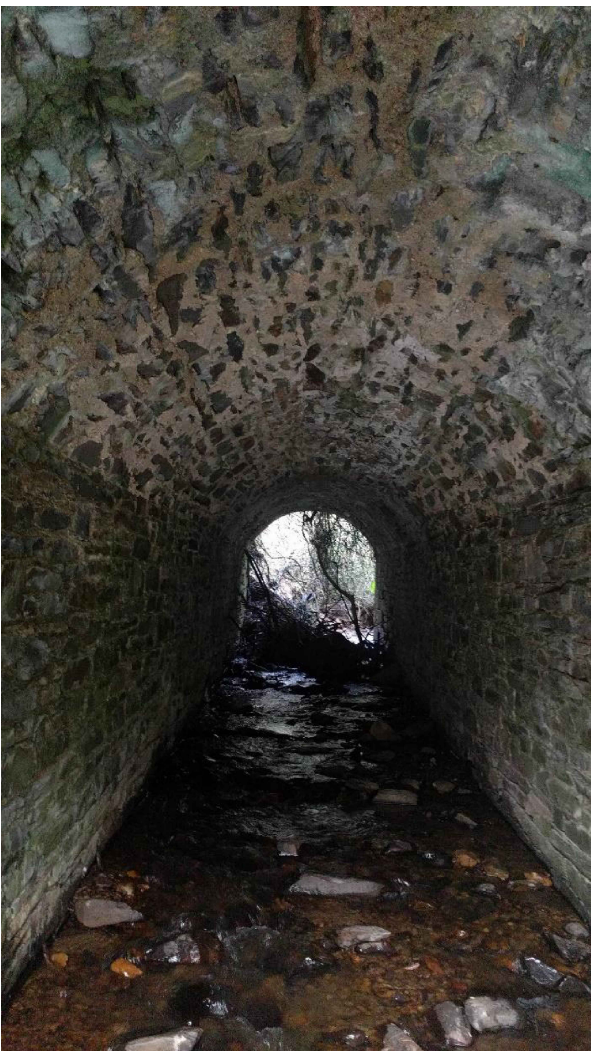
Project Management Initials: Designer: GD Checked: SK Approved: RG

TLI Group Bridge Ref: Bridge 13
Watercrossing Ref: W44.



Detail 1- Proposed 110kV UG Cable Ducts in Trefoil Formation Crossing Bridge Scale: 1:10

- Notes:**
1. This drawing is to be used only for the purpose of the planning application and is subject to detailed design.
 2. This drawing is to be read in conjunction with all other relevant information.
 3. Do not scale from this drawing, use only printed dimensions.
 4. All dimensions are in millimetres. All chainages, levels and coordinates are in metres unless defined otherwise.
 5. The existing utility service information shown on this plan is a general guide and the accuracy thereof cannot be guaranteed. no liability is accepted for any discrepancy, omission or deviation and the actual position of individual services must be verified and established on site before commencing the works.
 6. No excavation shall commence until the contractor has consulted up to date services drawings and carried out an electromagnetic locator (eml) scan.
 7. Hand dig only within 500mm of existing services.
 8. All co-ordinates are referenced to ITM.
 9. Drawings are in compliance with ESNB specification requirements for shallow formation, bridge crossings, etc.



Head Office
Beenleigh,
Abbeystowney,
Tralee, Co. Kerry
Ireland
Tel: 00353 66 7135710

Regional Office
Basepoint Business Centre
Stroudley Road, Basingstoke,
Hampshire,
RG24 8UP, UK
Tel: 00 44 1256406664

PROJECT

110kV Underground Cabling
for Upperchurch Wind Farm
Grid Connection

CLIENT



CONSULTANTS

NOTES: -

LEGEND: -

Proposed 110kV Underground Cable

ISSUE/REVISION

03	17.07.19	Issued for Planning
02	11.07.19	Issued for Planning
01	25.06.19	Issued for Planning
00	12.03.19	Issued for Information
I/R	DATE	DESCRIPTION

PROJECT NUMBER

05-652

SHEET TITLE

Bridge 13 (W44).
Crossing Details

SHEET NUMBER

05652-527